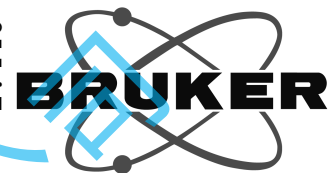


6.171
6.162
5.629
5.621
4.889
4.885
4.863
4.852
4.771
4.718
4.697
4.672
2.652
2.643
2.635
2.438
2.419
2.405
2.360
2.348
2.332
2.327
2.320
2.312
2.297
2.285
2.195
2.164
2.131
2.120
2.116
2.089
2.071
2.056
2.043
1.763
1.756
1.751
1.738
1.732
1.724
1.712
1.710
1.446



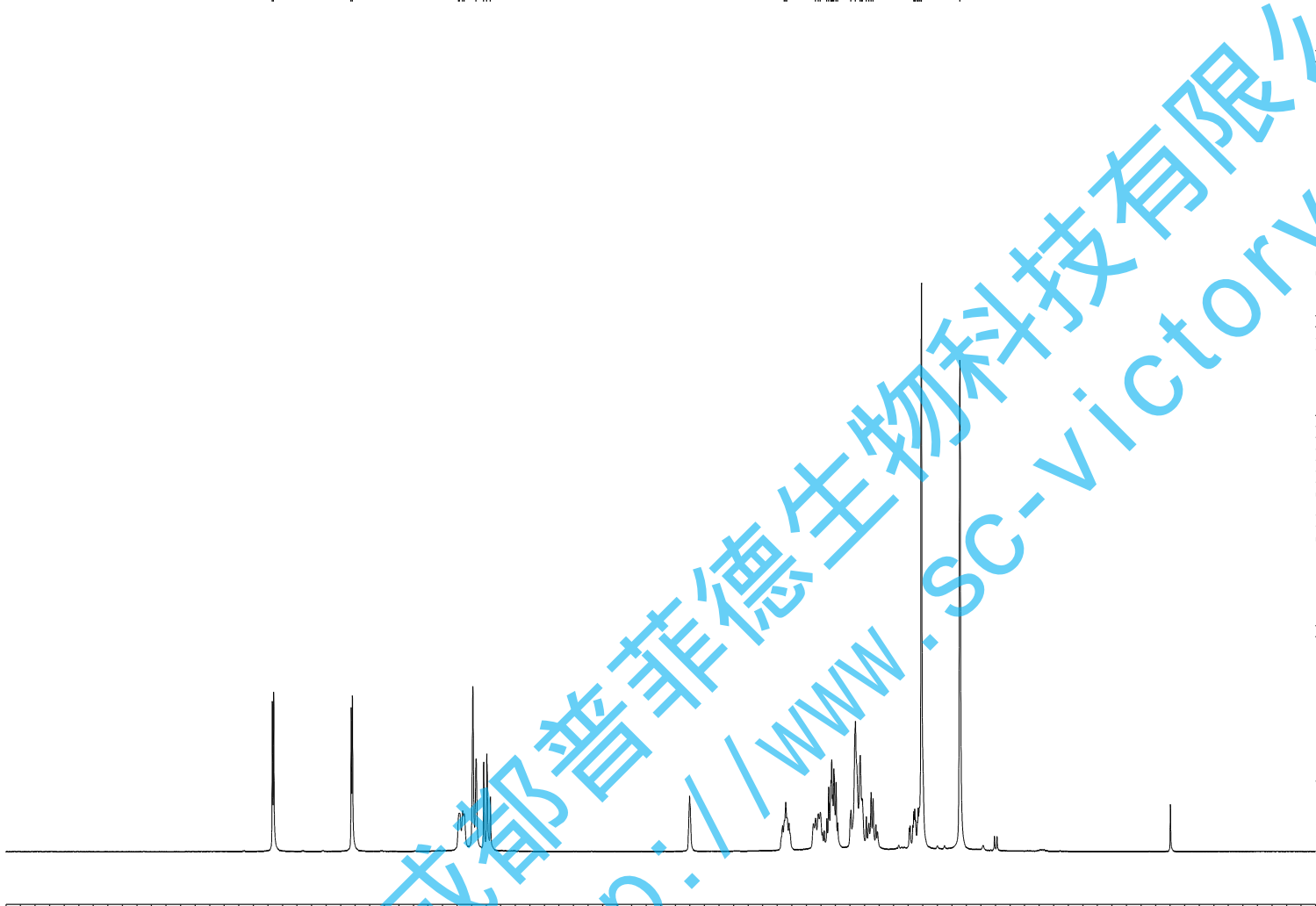
Current Data Parameters
NAME MuXiangTingNeiZhi-1H NMR CD3OD
EXPNO 2
PROCNO 1

F2 - Acquisition Parameters

INSTRUM spect
PROBHD 5 mm PABBO BB/
PULPROG zg30
TD 65536
SOLVENT MeOD
NS 16
DS 2
SWH 8012.820 Hz
FIDRES 0.122266 Hz
AQ 4.0894465 sec
RG 57.2
DW 62.400 usec
DE 6.50 usec
TE 301.2 K
D1 1.00000000 sec
TD0 1

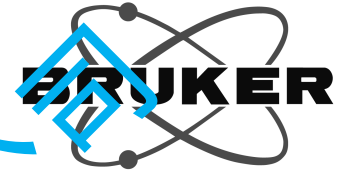
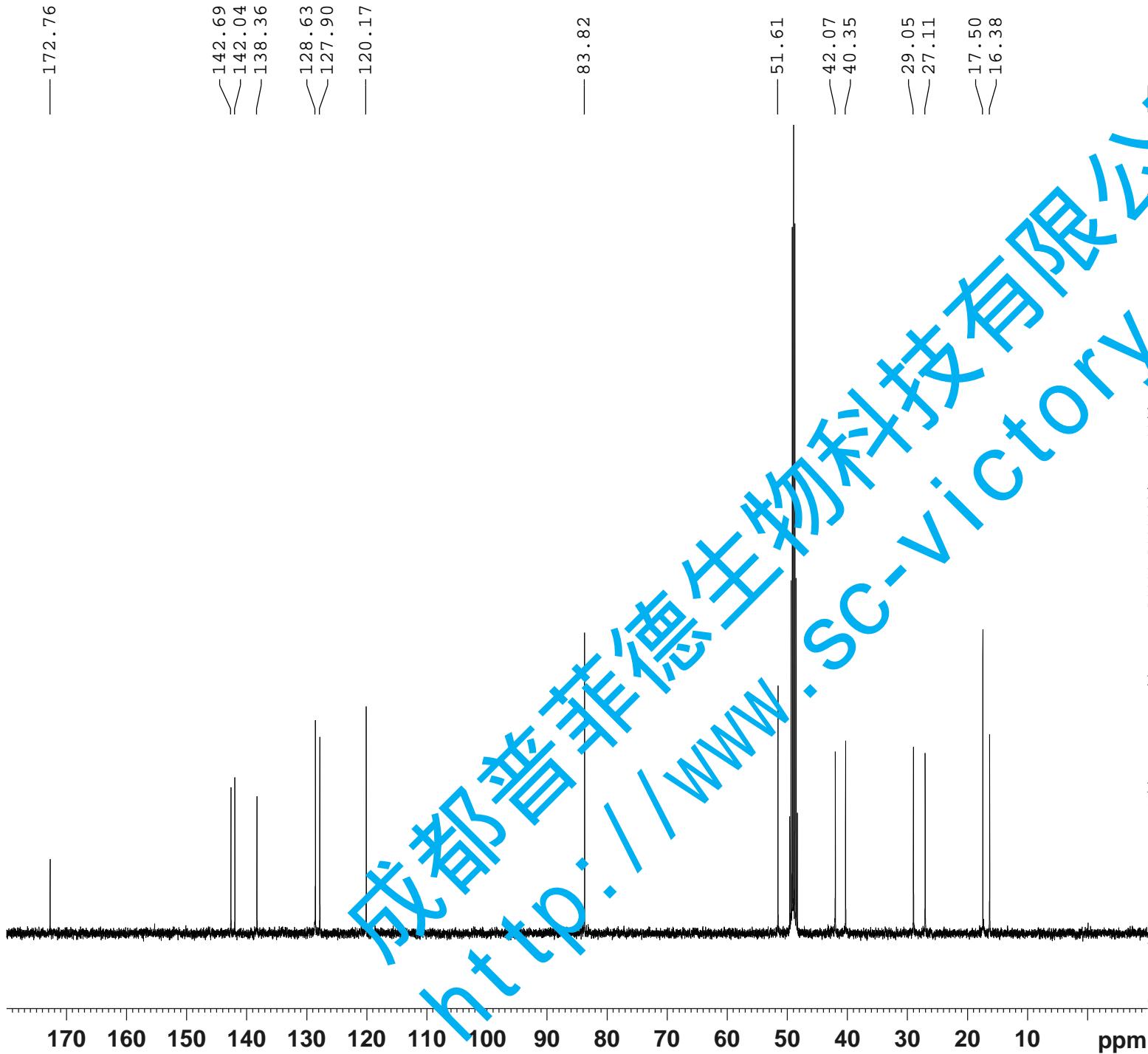
==== CHANNEL f1 =====
SFO1 400.1324710 MHz
NUC1 1H
P1 15.36 usec
PLW1 11.50800037 W

F2 - Processing parameters
SI 65536
SF 400.1300102 MHz
WDW EM
SSB 0
LB 0.30 Hz
GB 0
PC 1.00
SINO 0



1.00
1.02
1.06
0.84
1.11
1.06
1.27
2.20
3.36
1.14
4.35
3.25

www.sc-victory.com
成都普菲德生物科技有限公司



Current Data Parameters
 NAME MixiangTingNeizhi-13C NMR CD3OD
 EXPNO 2
 PROCNO 1

F2 - Acquisition Parameters

INSTRUM spect
 PROBHD 5 mm PABBO BB/
 PULPROG zgig30
 PD 65536
 SOLVENT MeOD
 NS 339
 DS 4
 SWH 24038.461 Hz
 FIDRES 0.366798 Hz
 AQ 1.3631488 sec
 RG 202.5
 DW 20.800 usec
 DE 6.50 usec
 TE 301.2 K
 D1 2.00000000 sec
 D11 0.03000000 sec
 TD0 1

==== CHANNEL f1 =====
 SFO1 100.6228298 MHz
 NUC1 13C
 P1 10.79 usec
 PLW1 51.00000000 W

==== CHANNEL f2 =====
 SFO2 400.1316005 MHz
 NUC2 1H
 CPDPRG[2] waltz16
 PCPD2 90.00 usec
 PLW2 11.50800037 W
 PLW12 0.33519000 W

F2 - Processing parameters
 SI 262144
 SF 100.6126288 MHz
 WDW EM
 SSB 0
 LB 1.00 Hz
 GB 0
 PC 1.40
 SINO 0

成都普菲德生物科技有限公司
<http://www.SC-victory.com>